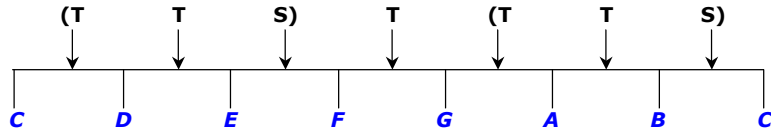


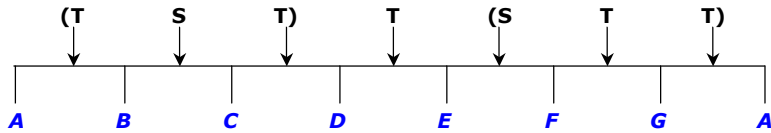
**This chart demonstrates the interval patterns (relationships) that are used to create different types of musical scales**

**T = Tone; S = Semitone**  
which are the intervals (gaps) between notes of scales

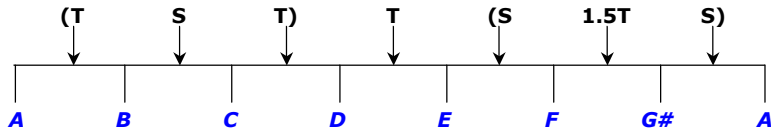
C Major Scale:



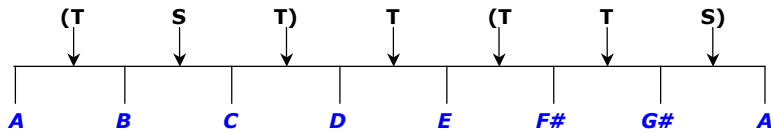
Natural Minor Scale



Harmonic Minor Scale



Melodic Minor Scale (ascending)



Melodic Minor Scale (descending)

